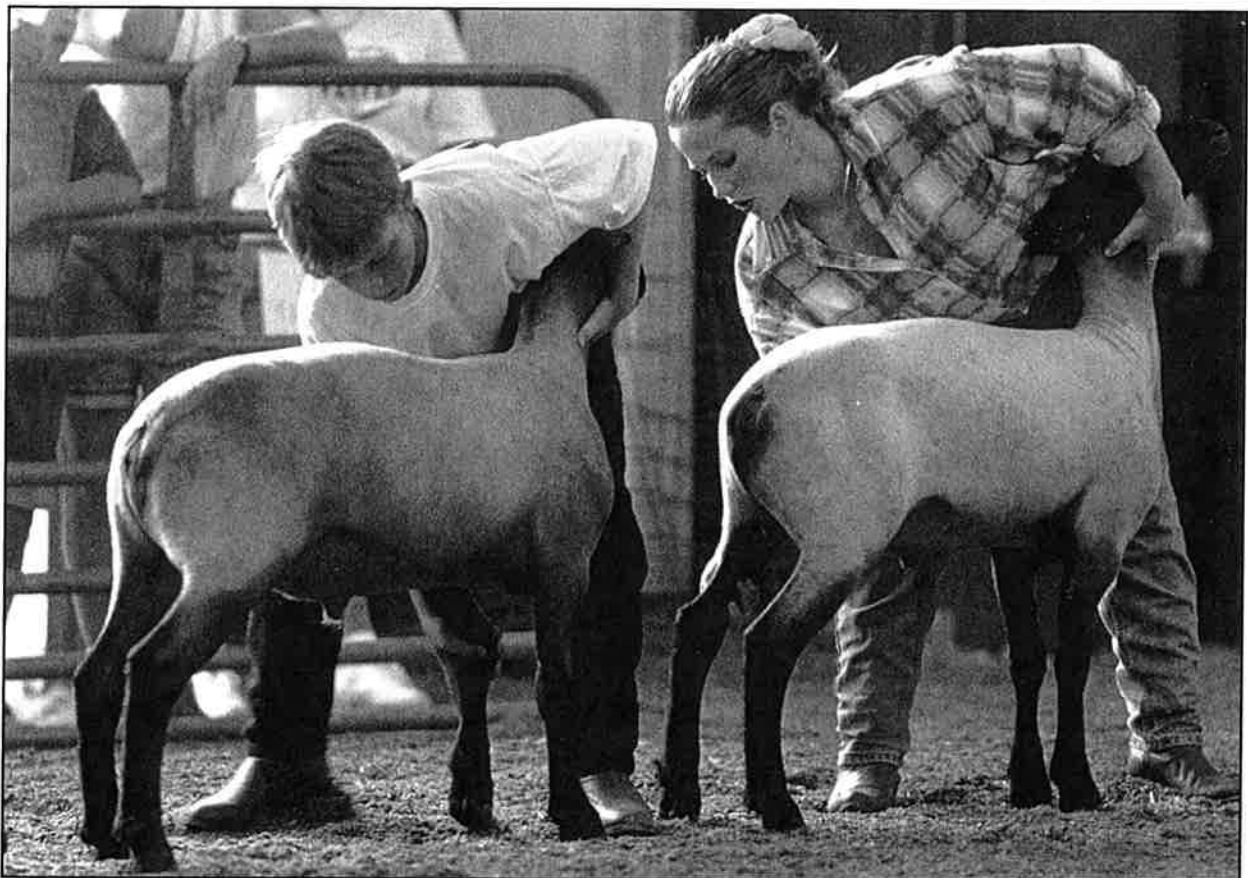


Showing

- The key to show ring success is to present your animal as efficiently and effectively as possible. A good showman will always make his or her animal look the best that it can, emphasizing the good points and de-emphasizing the bad points.
- Bring the sheep into the ring slowly, keeping a nice constant speed. Move the sheep with one hand under the jaw and the other hand either on the dock or behind the ears. Keep calm control, remember that the first impression that a judge has of you and your lamb is a very important one.
- Don't crowd your sheep in line. Leave plenty of room between you and the next exhibitor. Move into position and set your sheep up. Always set the legs closest to the judge first. You will have the most control if you reach over the top of the animal to set the legs with your free hand. However, many young people cannot reach over the top of the sheep. You will need to do what is most comfortable for you.
- Set all four legs squarely under the sheep. You may want to set the hind legs slightly wider than the front legs. This makes the sheep look wider from behind.
- After the animal is set up, move to its shoulder opposite the judge and kneel, making sure to keep the head up and topline straight. Most judges prefer you not put your knees on the ground, so you do not get sawdust on the sheep or lose control in the show ring.
- Whenever you move the sheep into the ring or during the show, be sure to keep the animal between you and the judge. Do not block the judge's view of your sheep. To turn the animal keep your hand on the jaw, not the throat, and turn its head toward your belt buckle. Slowly move the sheep toward you, switch hands until you stand at the opposite shoulder.



- Alertness in the ring is extremely important. Keep one eye on the judge and one eye on your animal at all times. Pay attention to any directions or signals the judge may give, such as turning your sheep sideways and moving it from one place to another. Concentrate on what is going on in the show ring, not who is standing along ringside or who is sitting in the stands.
 - When the judge moves in the rear or in front of the animal, do not “jump” from one side to the other. Instead, slowly and deliberately move from one side to the other. If you move slowly, you will not scare your sheep or the sheep beside it.
 - When the judge goes to handle your sheep, there are several ways you can cause it to tighten up or “brace.” One way is to put a little pressure under the jaw and at the same time, pull the head down slightly. A second method is to place your knee against the sheep’s brisket and pull the head up. Both of these methods cause the sheep to push forward and tighten up. Most showmen use a combination of these two methods. Continue to brace the animal until the judge is done handling the sheep.
 - During the show, keep the sheep’s feet on the ground. Sheep are born with four feet to stand on, so let them use them. Also, do not strike the hind end of the sheep in an attempt to make the sheep feel firmer.
 - Courtesy in the show ring is very important. Do not try to take advantage of other exhibitors by pulling into line ahead of someone else or having your sheep out of line so the judge cannot see others. Lack of courtesy in the show ring is very irritating to judges.
 - Be calm, and don’t be overly aggressive and “over-show.” Be patient with your sheep and don’t get upset if it doesn’t act just perfect. You will accomplish more by working slow, than by being mean to your sheep.
 - Pay attention when the judge gives his or her reasons so that you will know what to improve for next year.
 - Sportsmanship is very important—be a good winner as well as a good loser. Above all, learn from your experiences.
- Remember to concentrate on your animal’s position and watch the judge. You should have a calm, confident manner in the show ring.

